

Windows 7 Wireless Instructions

Open Control Panel and select Network and Sharing Center:

Select “Manage Wireless Networks” on the left side:

Select Add to add a wireless network:

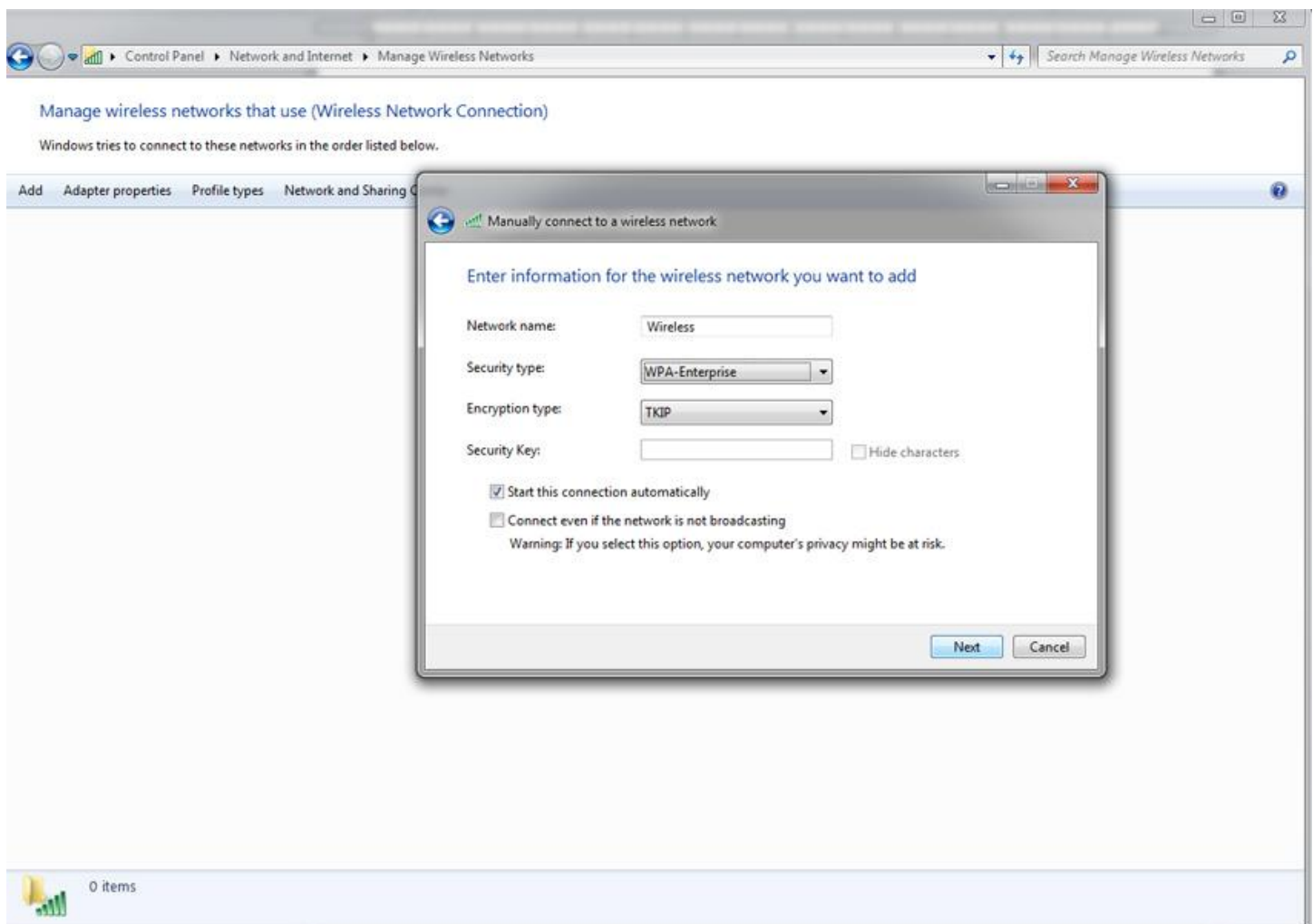
Select Manually create a Network Profile

Enter “Wireless” for the Network name. It is case-sensitive so you MUST use a capital “W” in “Wireless”.

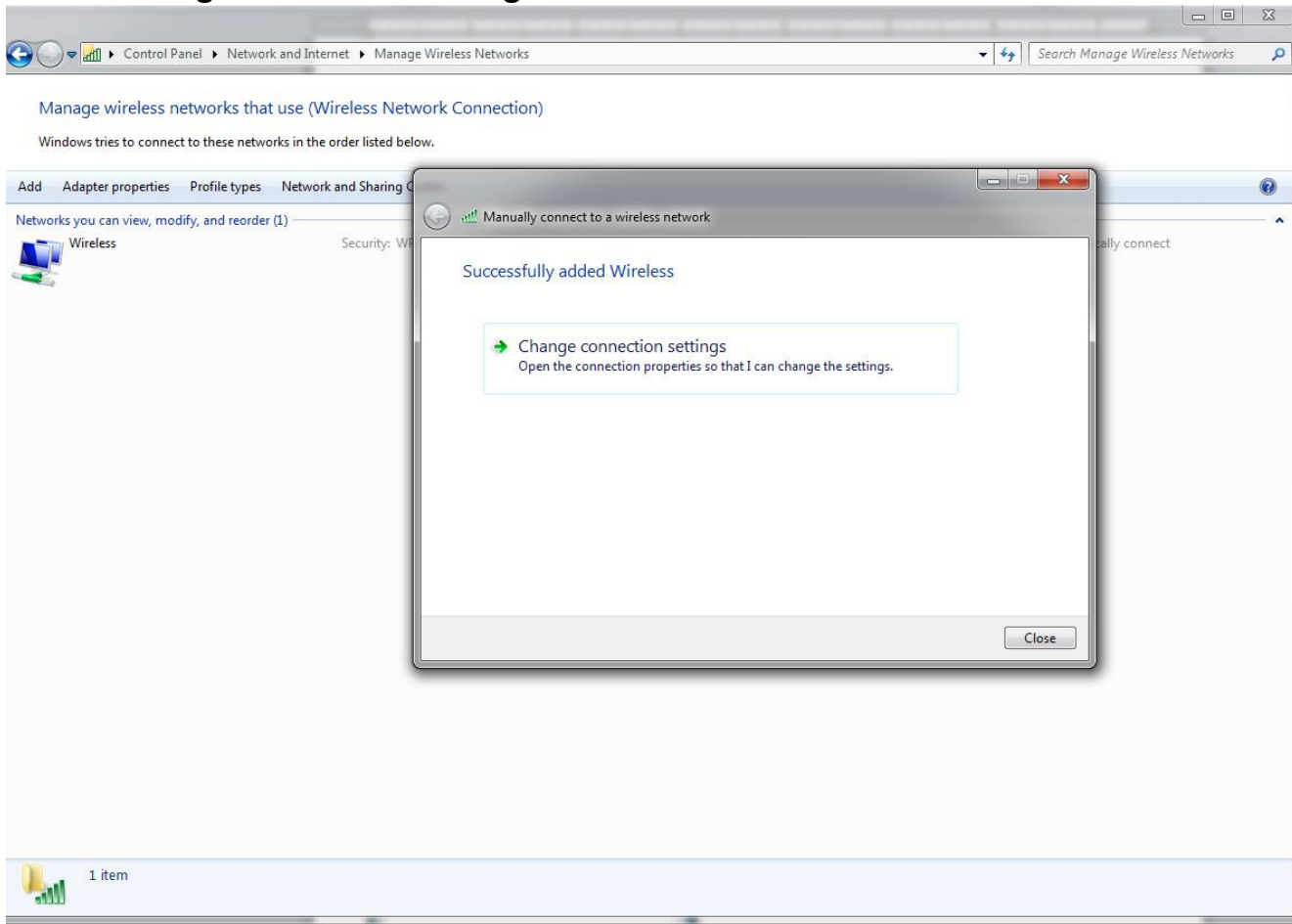
Select WPA-Enterprise for the Security type.

Select TKIP for the Encryption type.

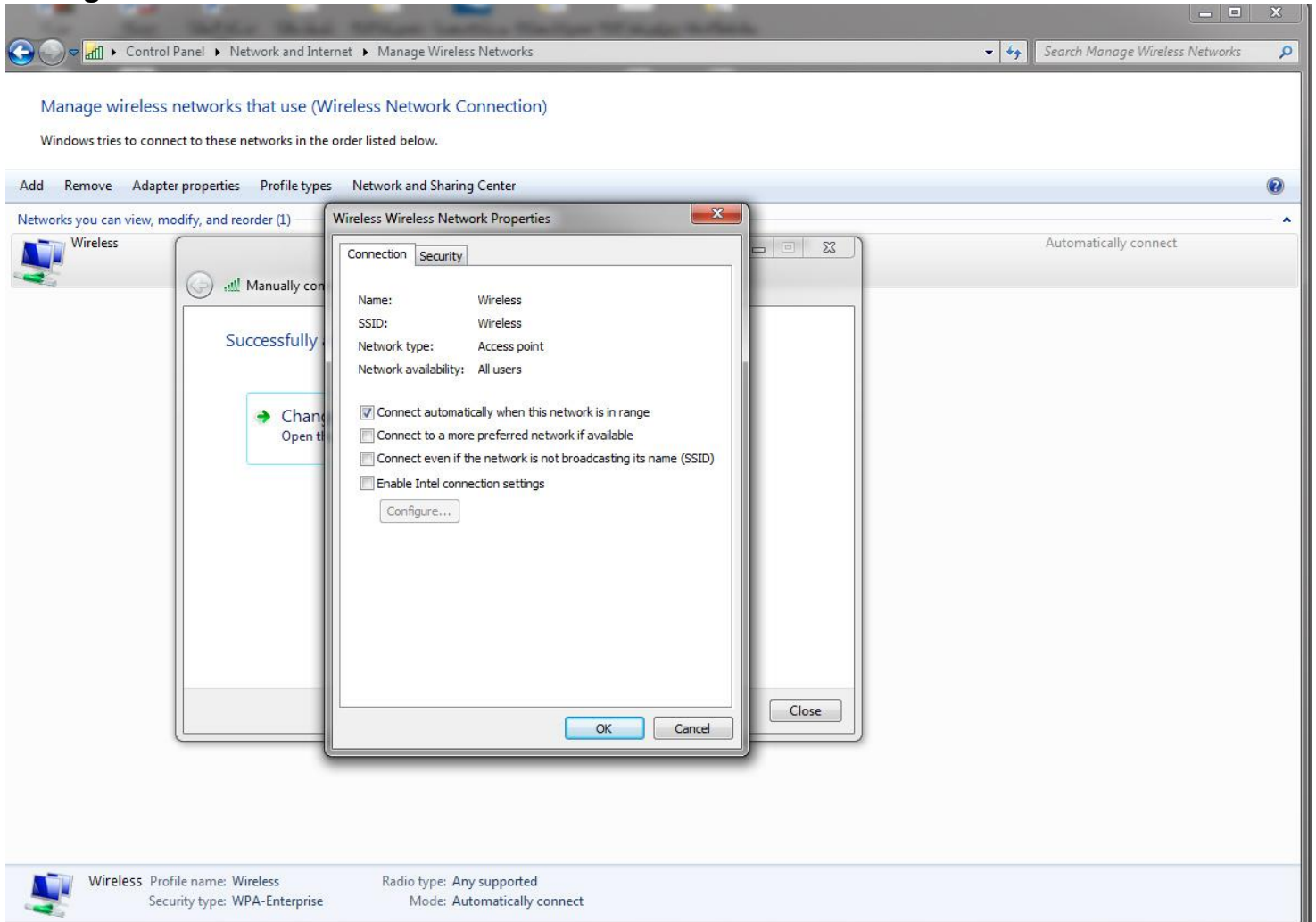
Click on Next.



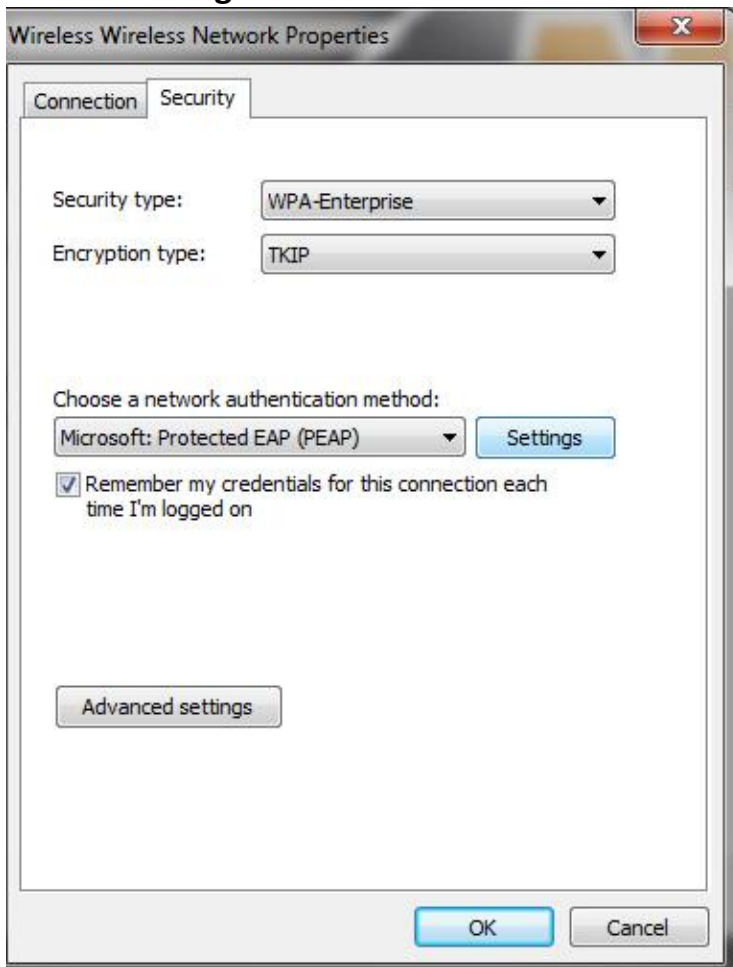
Select "Change connection settings"



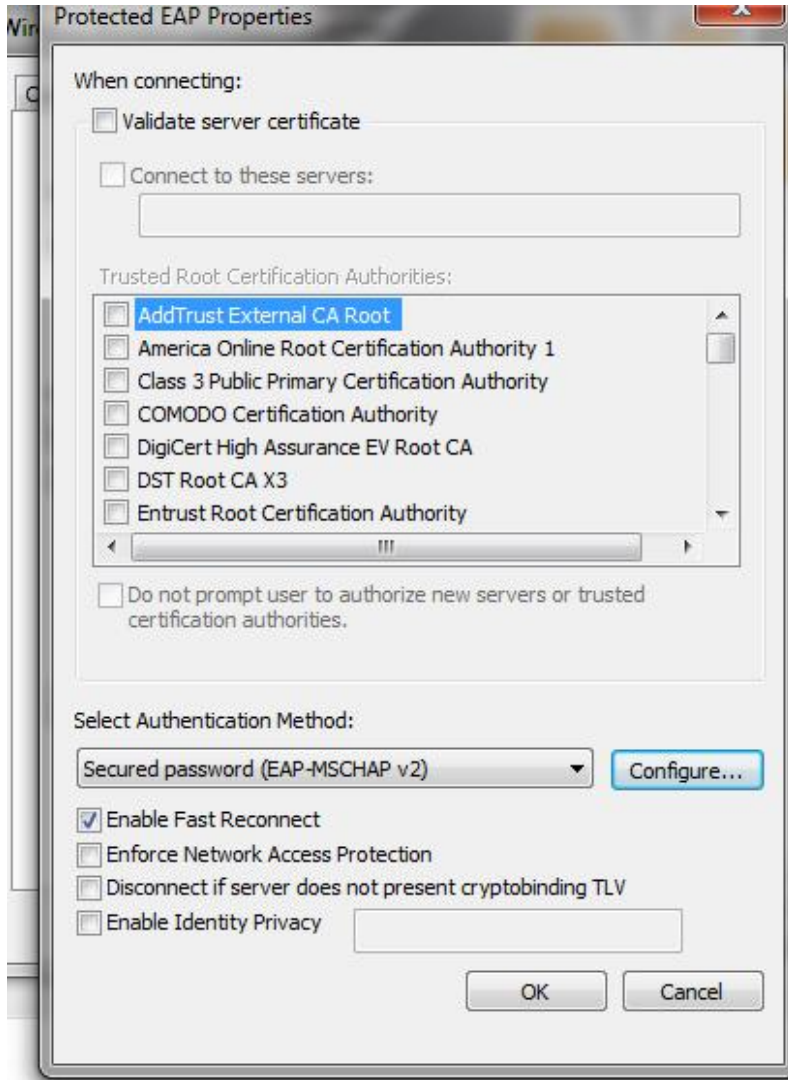
The Wireless Network Properties Box will appear. Select the Security Tab to change the settings.



Select "Settings" under "Choose a network authentication method"



Uncheck “Validate server certificate” then click on “Configure” under “Select Authentication Method”

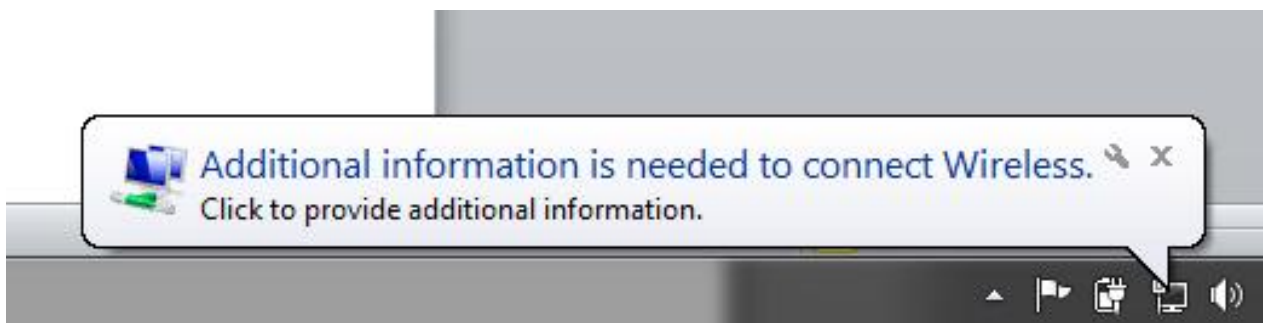


Uncheck “Automatically use my Windows logon name and password (and domain if any).”



Click OK, OK, OK, and then close to close all the open windows.

Click on the bubble that appears and states “Additional Information is needed to connect Wireless”



Enter your username (your Cougar ID – last name and last 4 digits of your social) and your password is your student ID#.



You might need to enter your username and password 3 times in order to connect. If you need further help please come by the Computer Center or call us at 354-2522.