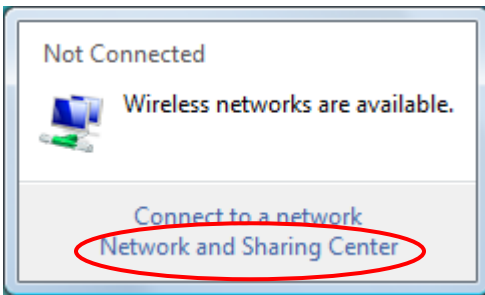


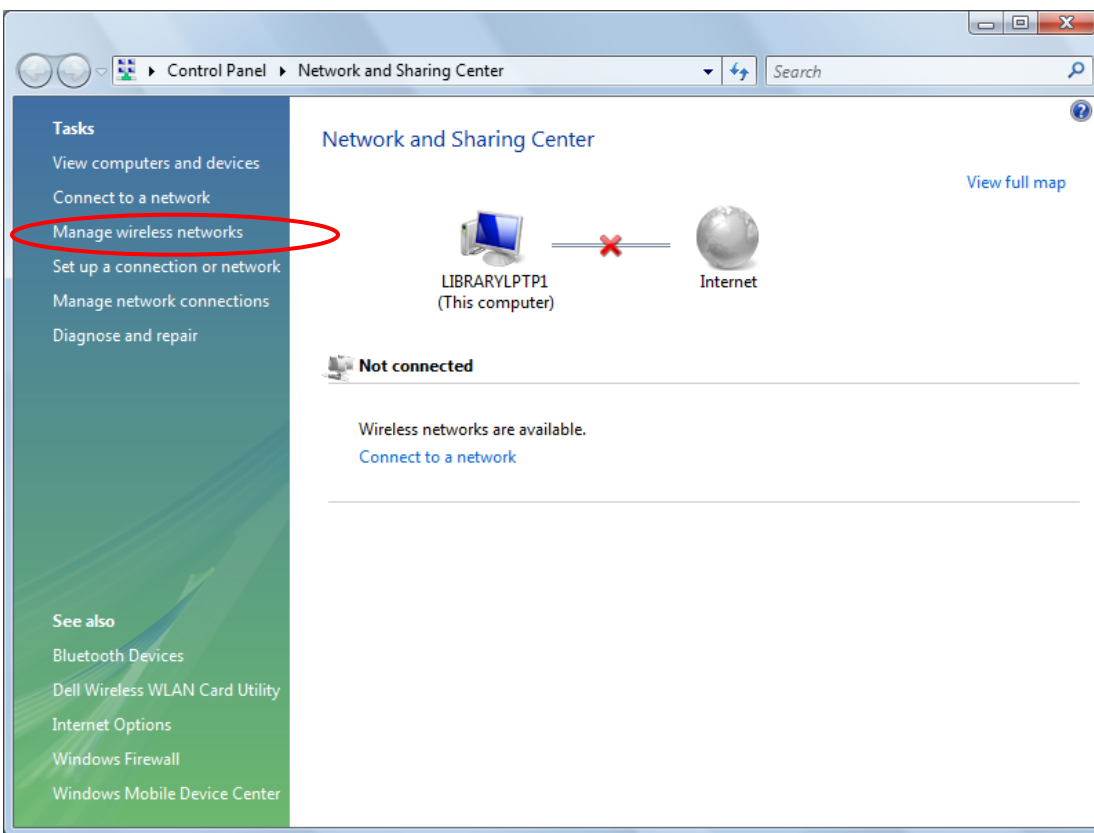
# Wireless Laptop Configuration Instructions – Laptops with Windows Vista

**Step 1 - At the bottom right corner, click on your wireless networks icon to launch the “Wireless networks are available” window**

**Step 2 - Click on “Network and Sharing Center”**

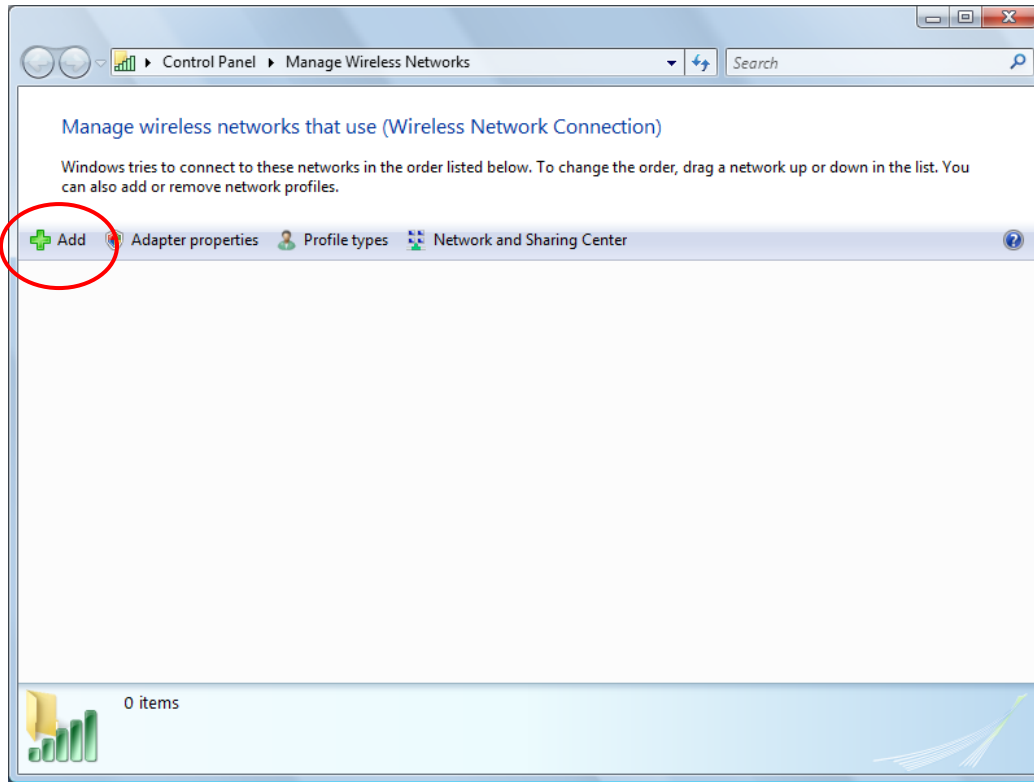


The Network and Sharing Center:



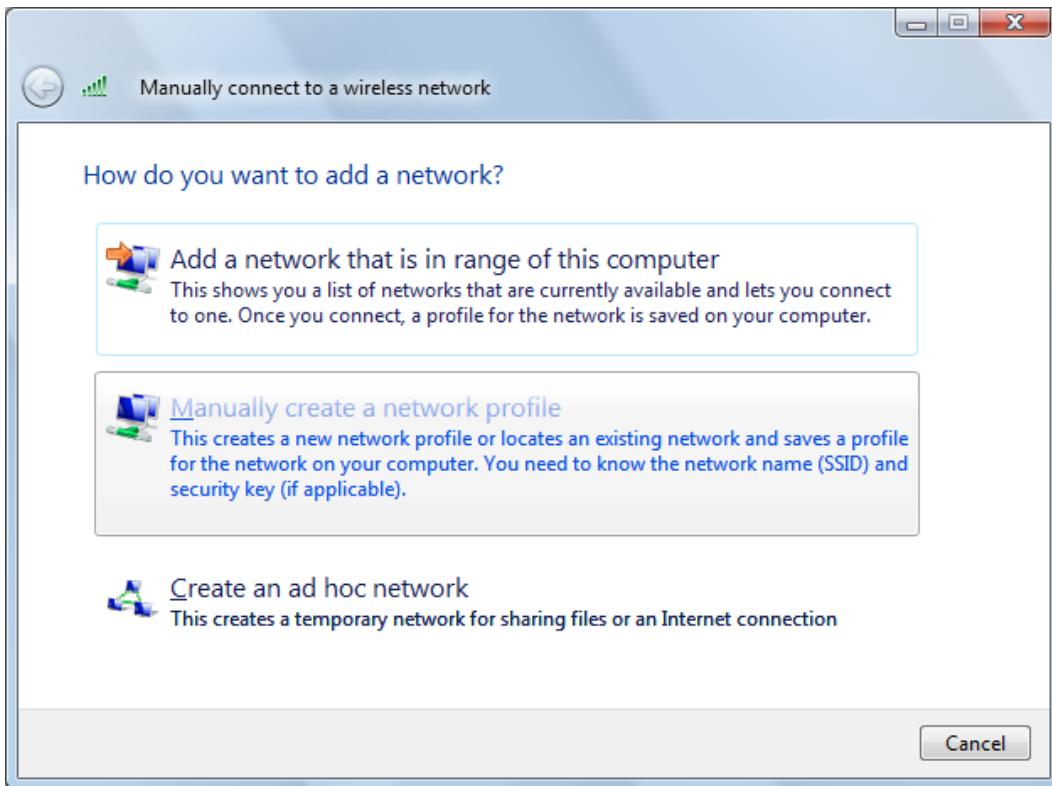
**Step 3 - Click on “Manage Wireless Networks”**

The Manage Wireless Networks window:



**Step 4 - Click on the + Add button.**

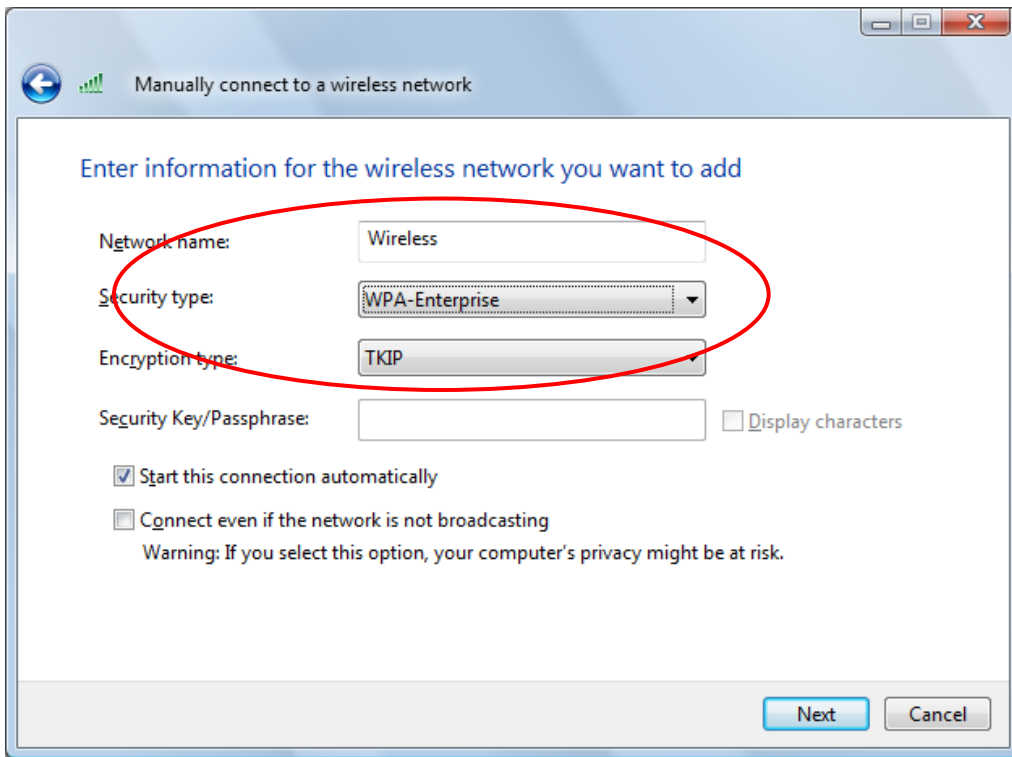
The Add Network window:



**Step 5 – Click on “Manually create a network profile”**

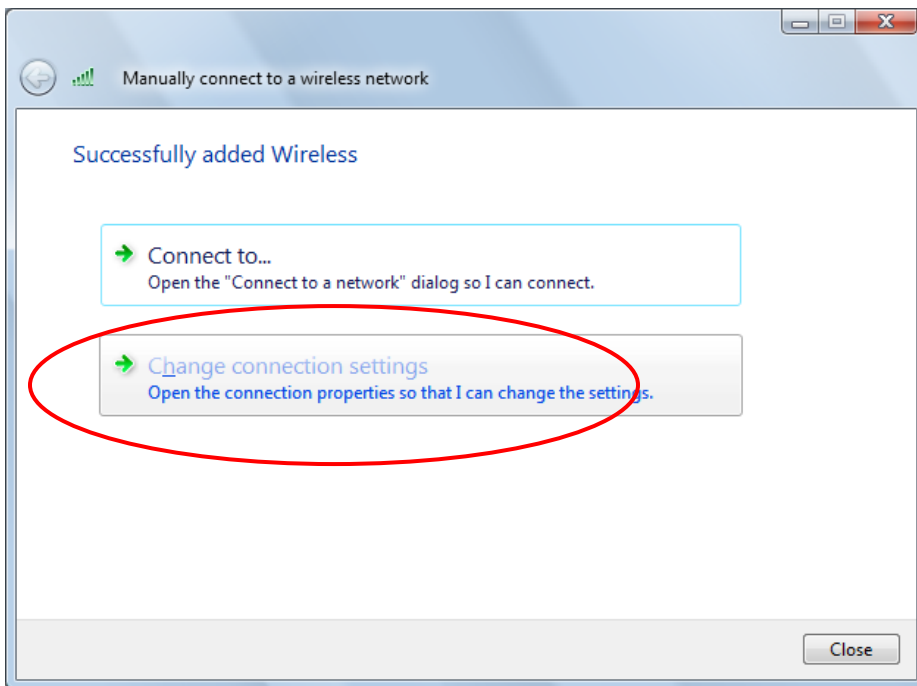
**Step 6 – Enter this information:**

Network name: Wireless  
Security type: WPA-Enterprise or WPA2-Enterprise  
Encryption type: TKIP



Then press the "Next" button

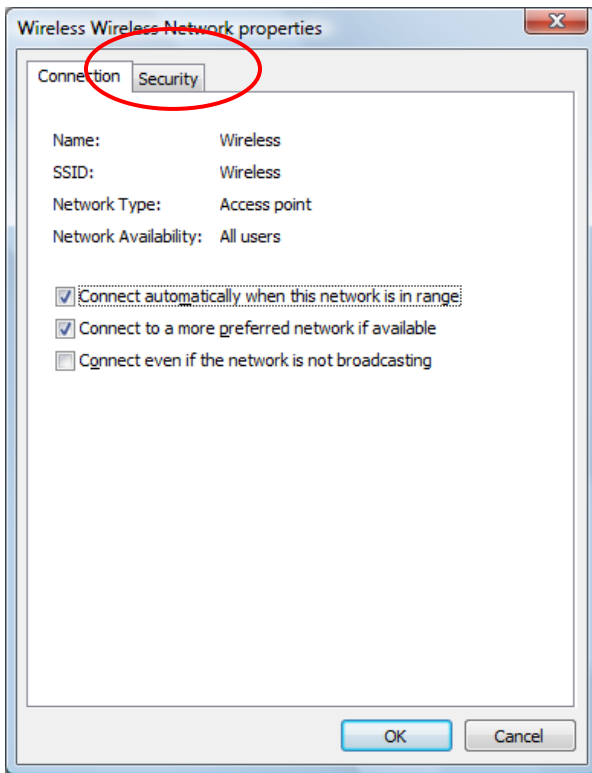
The "Successfully added Wireless" window should pop up:



**Step 7 - Click on Change Connection Settings – DO NOT SKIP STEP 7 - 13!**

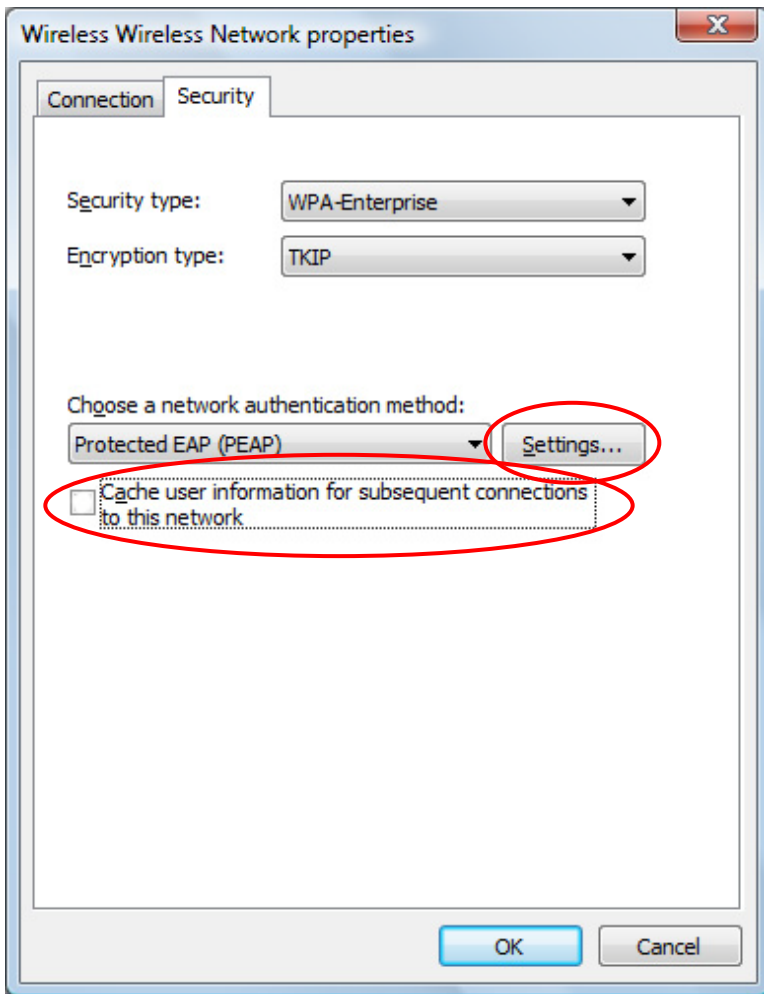
The Wireless network properties window:

Make sure the "Connect automatically" and "Connect to a more preferred network" options are checked off



**Step 8 – Click the “Security” tab**

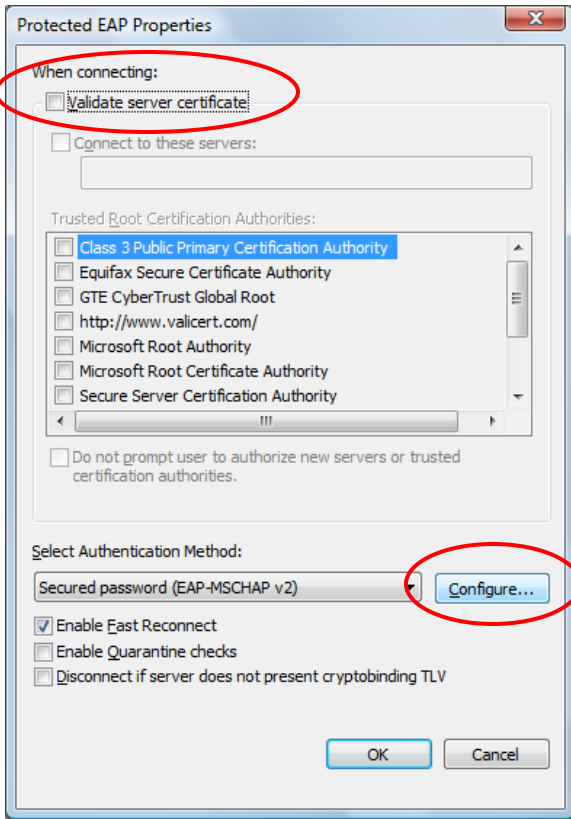
**Step 9 – Check the “Cache user information” option to allow your laptop to connect automatically each time you are in range of the CBC Wireless service. Leave it unchecked if you want to log in each time.**



**Step 9 – Click the “Settings” button to launch the Protected EAP properties window**

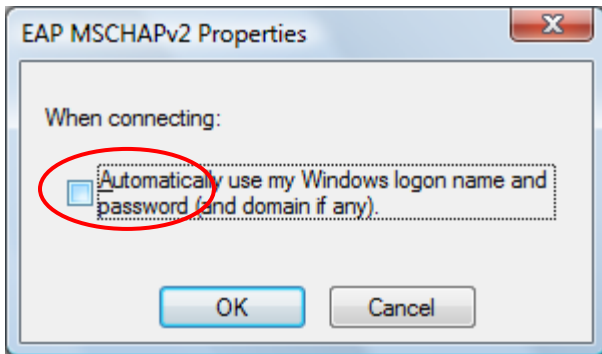
**UNCHECK CACHE USER INFORMATION FOR SUBSEQUENT CONNECTIONS TO THE NETWORK**

The Protected EAP Properties window:



**Step 10 - UNCHECK the Validate server certificate, then press the Configure button**

The EAP Properties window:

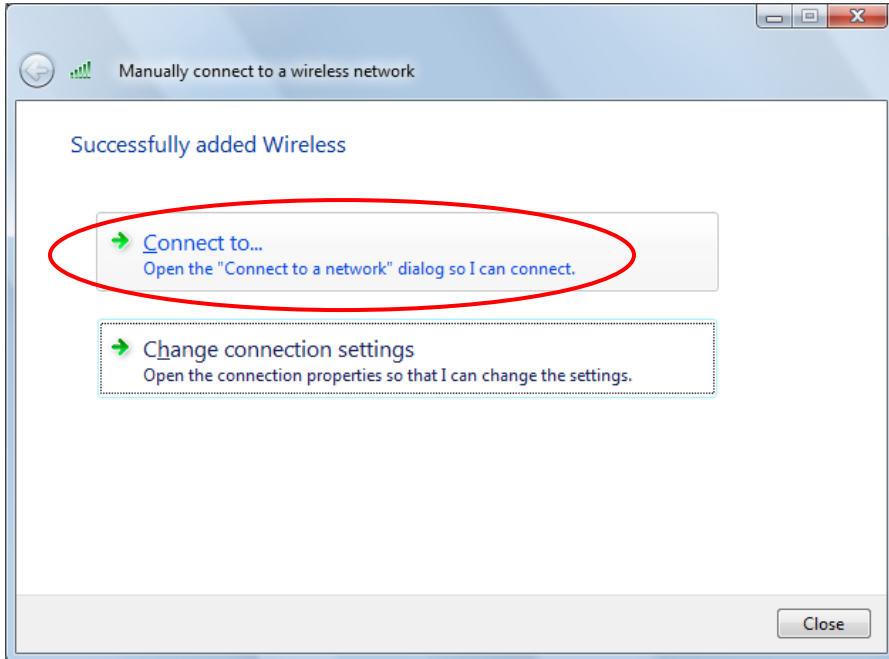


**Step 11 - Uncheck the "Automatically use my Windows logon name and password" option**

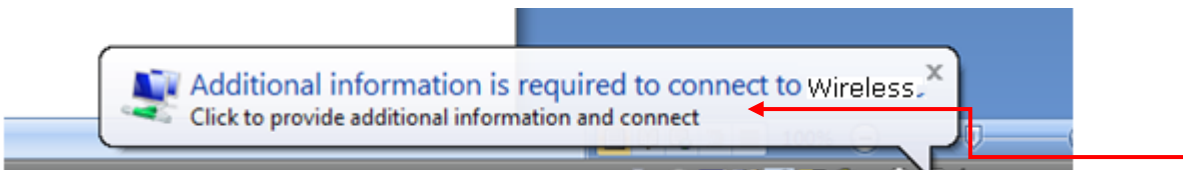
**Step 12 - Close the three windows**

Press the OK buttons three times and to close the EAP Properties window, the PEAP Properties window, and the Wireless Network properties window.

**Step 13 – on the “Manually connect to a wireless network” window, click “Connect to...”**



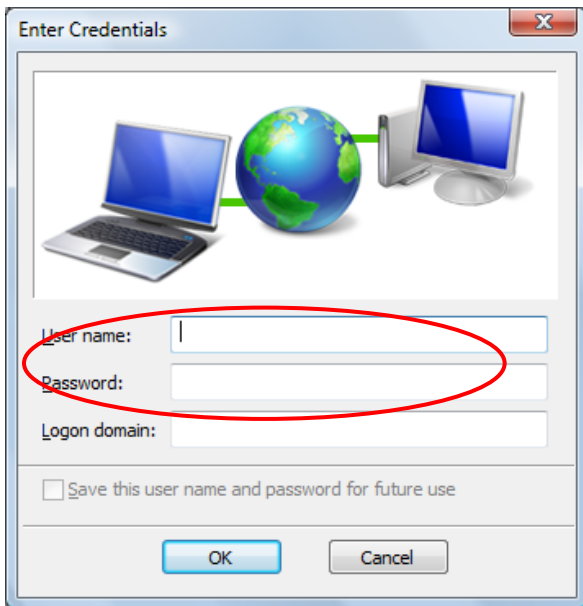
**Step 12 - A dialog box opens in the right bottom screen to ask for additional login. Click on the box to launch the login window.**



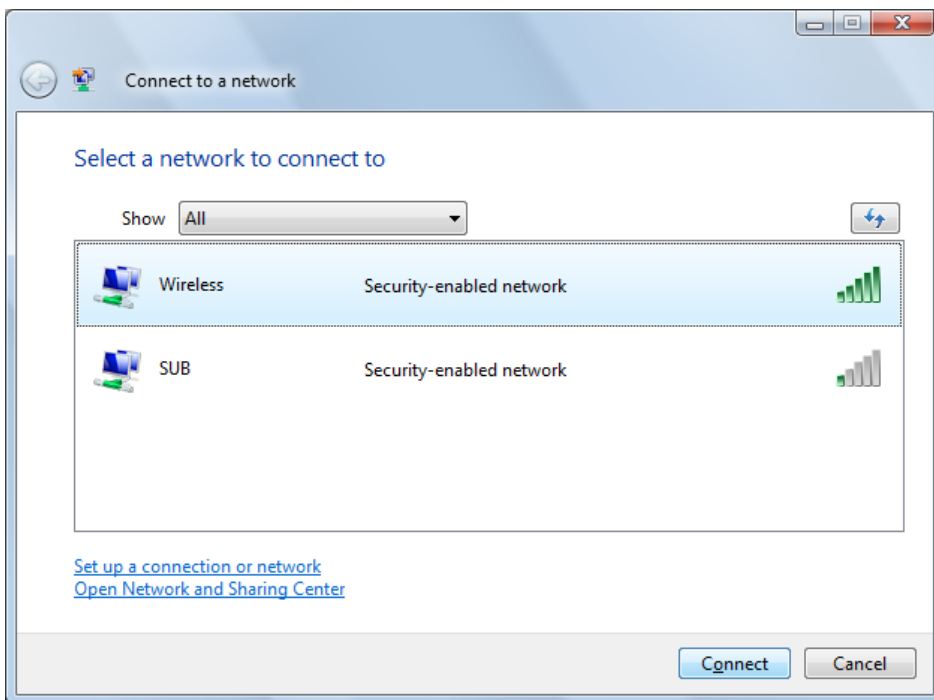
**Step 13 – Enter your CougarID and password. Your CougarID is your last name and the last four digits of your Social Security number (EX: smith9999). Your password is you Student ID number with no dashes (Ex:111009999). There is NO Logon Domain**

The Enter Credentials window:





You are now connected!



You may see the "Connect to a network" window. Choose the "Enter/select additional log on information" option to launch the Enter Credentials window

